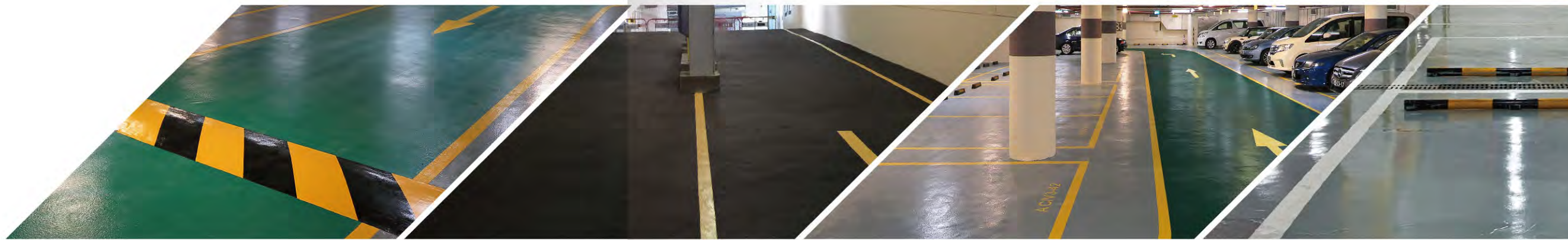




TOPLUSFLOOR Parking System

托柏斯停車場地坪系統



展鵬工程 ENGENHARIA FALCAO

TEL: +853-2853 2483

FAX: +853-2853 2484

EMAIL: info@toplusworld.com

info@falcao.com.mo

ADD: 澳門荷蘭園大馬路49號新禧閣1樓E座

Avenida Conselheiro Ferreira de Almeida

No.49 Edif. San Hei Kok 1 Andar, E, Macau

WEB: www.toplusworld.com

Contents 目錄

TOPLUSFLOOR Parking System

托柏斯停車場地坪系統

Introduction 簡介	01
Strengths 優點	02
Features 特性	03
Application 應用範圍	04
Surface Preparation 地基處理	06
Roof & Flat Parking Space 屋頂及平面停車場	08
Toplus RP Anti-slip and Wear-resistance PU System 托柏斯RP聚氨酯面塗止滑耐磨系統	09
Ramp Area 停車場斜坡道	10
Toplus AR Super Wear-resistance with Anti-slip & load-bearing System 托柏斯AR超耐磨防滑負重系統	11
Flat Parking Space 停車場夾層平面	12
Toplus FS Flat Space Anti-slip and Wear-resistance System 托柏斯FS平面防滑耐磨系統	13
Basement Parking Space 地下/底層停車場	14
Toplus BS Concrete-based Moisture-resistance System 托柏斯BS水泥基抗潮氣系統	15
TOPLUSFLOOR Parking Standard Colour Chart 托柏斯停車場標準色卡	16
Project Photo 實例圖片	17

TOPLUSFLOOR Parking System Introduction

Nowadays, the car park plays an important role in any public, private or commercial building.

Providing a bright lighting and clear directional marking all help to make a car park a more positive and safer environment for the car owner.

By utilizing the very best of protective coating systems on the internal structure of the car park, visual appearance can be enhanced, light reflectivity can be improved and increase carpark floor durability, high level of safety and minimize maintenance costs.

As the growth in construction of commercial structures continues, more and more cars visit airports, malls, hotels, office blocks and public buildings on a daily basis, it is crucial to make that first impression count.

Toplus Parking Floor System has passed fire tests and numbers of international testing standards. There are four systems could meet your satisfaction for different structure & designs of a car park building.

托柏斯 停車場地坪系統 - 簡介

在現今社會上，無論是公共建築抑或私人樓宇，停車場已成為建築物內不可或缺的一部份。

提供一個標示清晰、舒適環境及光鮮明亮的停車場環境，可讓來訪使用的客人放心及安心。而建立一個安全的停車環境，有利於提升建築大廈的優越性。

在室內停車場結構上塗佈最優質的塗層保護系統，除可美化其外觀，提高光纖反射度外，亦可提高其耐用性、安全性並降低停車場的維護成本。

隨著商業建築物的持續性增長，每天都有越來越多的車輛進入機場、商場、酒店、辦公樓等建築，故提升第一印象是非常重要的。

托柏斯停車場地坪系統，通過防火及多項國際檢測標準，並且擁有四個系統能滿足不同的停車場結構與設計。

TOPLUSFLOOR Parking System Strengths

托柏斯
停車場地坪系統 - 優點



* DURABLE

Toplusfloor Parking System is exceptionally hard wearing and crack-resistant, with high durability allowing it to stand up to heavy traffic, fuel and chemical spillages, lengthening the car park's lifecycle and minimizing future reinstallation cost.

✓ 耐久性

托柏斯停車場地坪適用於流動性大的停車場，具有耐磨和抗裂的性能，可以延長地坪使用壽命，並且對化學製品腐蝕有良好的耐受作用，減少未來翻新成本。

* SAFE

Toplusfloor Parking System includes a variety of profiled anti-skid finishes, making a safe environment for the car owner.

✓ 安全性

托柏斯停車場地坪系列具有多重防滑飾面，有利於建立安全的停車環境。

* CREATIVE

Toplusfloor Parking System offers a wide variety of colors and styles. Light reflective finish that defines vehicle and pedestrian areas and brightens dull environments.

✓ 創新性

托柏斯停車場地坪顏色豐富，風格多樣。光纖反射飾面可以亮化停車場環境，同時也可劃分車輛和步行區域。

* ENVIRONMENTAL

Toplusfloor Parking System is an environmentally friendly system, free from volatile organic compounds and safe for use in confined areas. And Toplusfloor Parking System is an environmentally flooring solution for your car park.

✓ 環保無溶劑

托柏斯停車場地坪是環保型的產品，沒有揮發性物質，在密閉環境中使用安全，可滿足您建立環境友好型地坪的需求。

* INSTRUCTIONAL

Toplusfloor Parking System comes with a demarcation system to highlight parking bay and specialized zones as well as to regulate traffic movement around the parking facility.

✓ 交通引導標識

托柏斯停車場地坪有配套的地面交通標示系統來標示停車位和特別區域，以便在停車設施區域管理交通運行流暢。

Main properties:

主要特性：

Surfaces are waterproof, aggressive liquids are prevented from penetrating into the concrete and coming into contact with the reinforcing bars.

表面防水，可以防止腐蝕性液體滲透，接觸到鋼筋。

Surfaces have a slip-resistant finish so that vehicles may travel in safety. The degree of slip resistance may be varied according to specific requirements.

表面防滑，可以使車輛安全行駛。耐滑程度可根據具體要求作出相應調整。

Toplusfloor Parking System have good resistance to chemicals such as oil, fuel, lubricants, de-icing salts, etc.

托柏斯停車場地坪系統對油、燃料、潤滑劑、除冰鹽等化學物質有良好的耐受性。

Toplusfloor Parking System offer a high degree of mechanical resistance to the passage of vehicles.

托柏斯停車場地坪系統對車輛的行駛有較高的機械阻力。

Easy to maintenance

易於維護

Good value for the cost, excellent performance

性價比高，性能優異

High durability

高度耐用

Toplusfloor Parking System have an attractive finish coatings and different colors can be used to divide areas according to specific type of use (e.g. trafficked areas for vehicles, parking areas, pedestrian trafficked areas, checkpoints, horizontal road signs, etc).

托柏斯停車場地坪系統完成效果好，同時可以根據不同的使用需求提供不同顏色選擇，如交通繁忙區域、停車場、人行道、檢查站、公路標誌等。



Application of Toplus Parking Systems

托柏斯停車場地坪系統的應用

Roof & Flat Parking Space 屋頂及平面停車場

Toplus RP Anti-slip and Wear-resistance PU System

托柏斯RP聚氨酯面塗止滑耐磨系統

High-quality roofs and flat parking space must have a very good UV and abrasion resistance to cope with all weather conditions. Mechanical wear, corrosion by chemicals, harmful gases and high temperature changes will impact on the parking surface and structure. Therefore, apply a non-slip and wear-resistant parking lot surface has good resistance to fuel and other substances, it can also prevent water from infiltrating the ground and corroding the steel bars in the structure.

優質的屋頂及平面停車場必須擁有非常好的抗UV及耐磨性能來應對全天候的變化。

機械磨損、腐蝕性化學品侵蝕、有害氣體以及高溫變化，會對停車場地坪表面及結構造成一定影響。所以鋪設一個止滑耐磨的停車場地坪表面，對燃油等物質具有良好的耐受性，亦可有效防止水滲入地面，腐蝕結構內的鋼筋。

Flat Parking Space 停車場夾層平面

Toplus FS Flat Space Anti-slip and Wear-resistance System

托柏斯FS平面防滑耐磨系統

Toplus RP Anti-slip and Wear-resistance PU System

托柏斯RP聚氨酯面塗止滑耐磨系統

The coating of flat space must offer protection against mechanical wear and chemicals corrosion. But the movements due to expansion and contraction of substrate are less compared with the top floor.

平面停車場地坪塗料必須對地坪起到保護作用，可以防止機械磨損以及化學物質腐蝕。相對於頂層而言，較少地基膨脹和收縮的問題。

Ramp Area 停車場斜坡道

Toplus AR Super Wear-resistance with Anti-slip & load-bearing System

托柏斯AR超耐磨防滑負重系統

The ramp in particular must be very strong with a highly slip-resistant finish, and able to prevent liquids from penetrating.

坡道處必須具有極強的防滑面，並且可以防止液體滲透。

Basement Parking Space 地下/底層停車場

Toplus BS Concrete-based Moisture-resistance System

托柏斯BS水泥基抗潮氣系統

In order to protect the trafficked areas on the lowest underground floors, the coatings resistance to mechanical wear and aggressive chemicals.

為了能對表面起到良好的保護作用，大樓地下底層塗料需具備以下特點：耐機械磨損、耐化學品腐蝕以及防止液體滲透。



TOPLUSFLOOR Surface Preparation

托柏斯地基處理

The critical factor for performance and durability of floor coatings
影響地坪耐用度的主要因素

Poor surface preparation is the major cause of floor coatings failures. Using correct surface preparation methods and equipment is essential to secure the cleanliness and surface profile necessary for the good adhesion and performance of floor coating systems.

地基處理不完全是地坪工程失敗的主要因素。使用正確的地基處理方法以及先進的設備可以確保地基表面無水泥浮漿及黏附性碎粒，加強面層塗料與地坪的黏合力。

Mechanical grinding

機械研磨

Disc grinding is a slower process than steel shot blasting but is an effective alternative method to prepare floors. It is useful to smooth out slight surface imperfections or flatten undulating areas and help achieve a good finish for the coating system.

相較於噴砂處理地基的方法，雖然採用磨盤打磨速度較慢，但仍不失為一種有效處理地基的替代方法。機械研磨可有效處理地坪表面輕微瑕疵，同時也可以整平地坪表面不平整的部份，做好地基表面預處理工作。

Advantage 優勢

Smooth out slight
水平校準不平整地面

No need to use water
無需用水



Steel shot blasting for concrete preparation

水泥地基 - 噴砂處理

Steel shot is centrifugally propelled at high velocity onto the substrate. It is the most effective and rapid method for the surface preparation of concrete floors, removing laitance, curing compounds and producing surface roughness for good mechanical adhesion of the coating system.

鋼砂以高速離心的方式噴打地基表面，這種地基處理方法可以快速及有效去除水泥地基上的浮漿、固化化合物，同時將地基表面打毛，增強塗料之間的黏合度。

Advantage 優勢

Dust-free
無塵化清理

No need to use water
無需用水

Quick clean
快速清理



Toplus RP Anti-slip and Wear-resistance PU System

托柏斯RP聚氨酯面塗止滑耐磨系統

Application: Roof & Flat Parking Space

應用：屋頂及平面停車場

The surface of Toplus RP Anti-slip and Wear-resistance PU Surface System is non-slip, with excellent UV and abrasion resistance. It is suitable for parking lots with large traffic flow, such as top floor of buildings and flat or outdoor parking lots.

托柏斯RP聚氨酯面塗止滑耐磨停車場地坪系統，此系統表面防滑，具有良好的抗UV性能及耐磨性能。適用於車流大的停車場，如樓頂頂層及平面或室外停車場。

UV resistance, slip-resistance, water-proofing, suitable for below area:
a. Flat roofs for vehicle use
b. Multi-story car parks
c. Garages
d. Internal & External car parks

此系統抗UV、防滑、防水，適用於：
a. 樓頂停車場
b. 多層半露天停車場
c. 車庫
d. 室內室外停車場

Toplus RP System Highlights:

托柏斯RP系統優點：



Toplus AR Super Wear-resistance with Anti-slip & load-bearing System

托柏斯AR超耐磨防滑負重系統

Application: Ramp Area

應用：停車場斜坡道

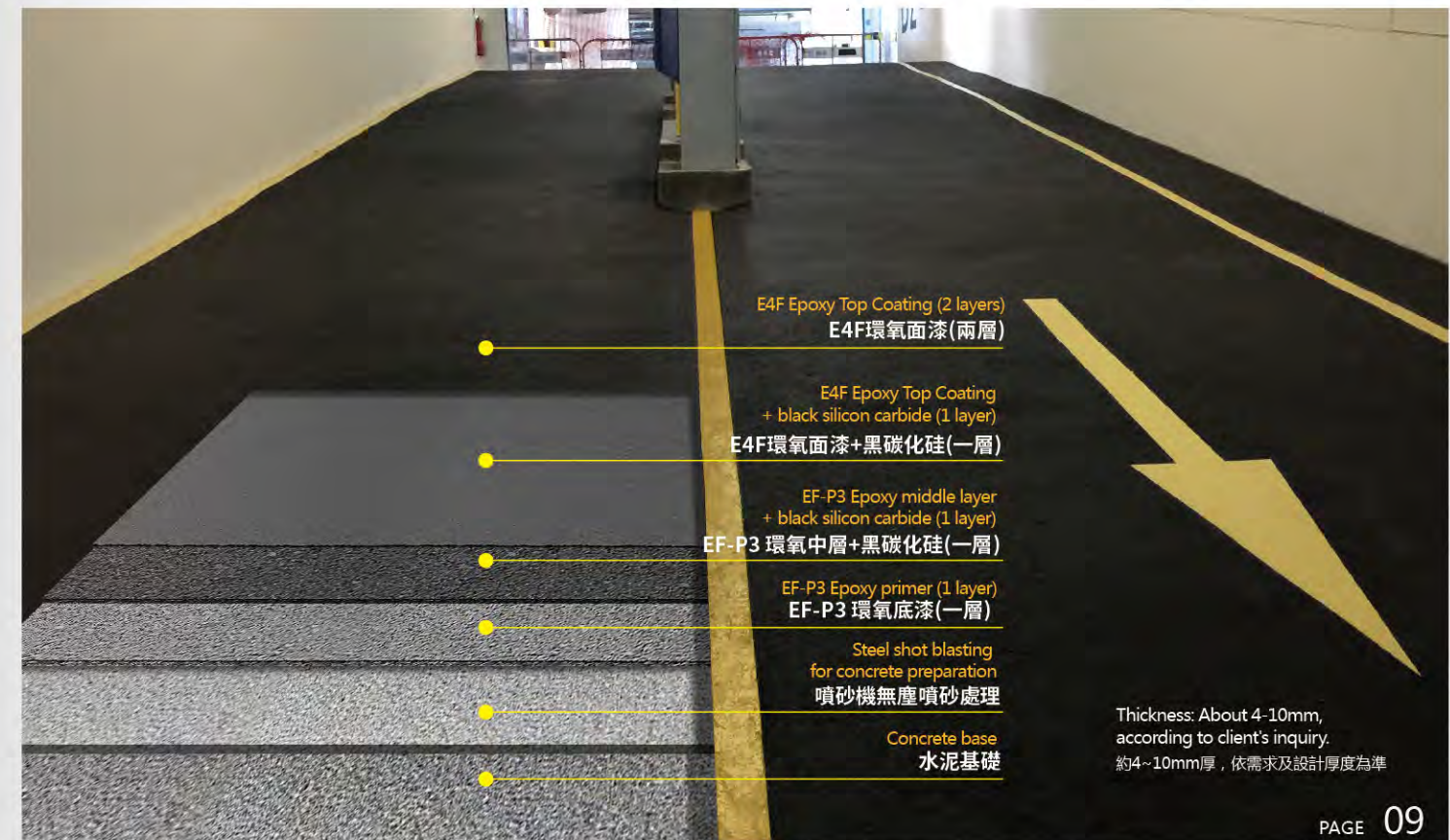
Toplus AR Super Wear-resistance with Anti-slip & load-bearing System, applies black silicon carbide to increase the degree of slip resistance on the surface. It has excellent water resistance and wear resistance. Suitable for ramps and parking lots with high mobility.

托柏斯AR超耐磨防滑負重系統，採用黑碳化硅加強防滑表面，此系統表面防滑，具有良好的耐水性能及耐磨性能。適用於斜坡道以及流動性高的停車場。

Slip-resistant, surface suitable for below purpose: 此系統表面防滑，適用於：
a. The ramp of car park a. 停車場斜坡道
b. Main road with heavy traffic b. 交通流量大的要道

Toplus AR System Highlights:

托柏斯AR系統優點：



Toplus FS Flat Space Anti-slip and Wear-resistance System

托柏斯FS平面防滑耐磨系統

Application: Flat Parking Space

應用: 停車場夾層平面

Toplus FS Flat Space Anti-slip and Wear-resistance System, form impermeable, durable, slip-resistance and seamless on surfaces in car parks, designed for heavy and busy traffic.

托柏斯FS平面防滑耐磨系統, 表面無縫無痕, 同時也具備良好的止滑性能及耐磨性能。適用於車流大的停車場。

Toplus FS System has various color choices; it is beautiful with seamless outlook, the surface is Anti-skid and wear-resistance, suitable for:

- a. Multi-story car parks- intermediate levels
- b. Internal trafficked areas for garages
- c. Garages

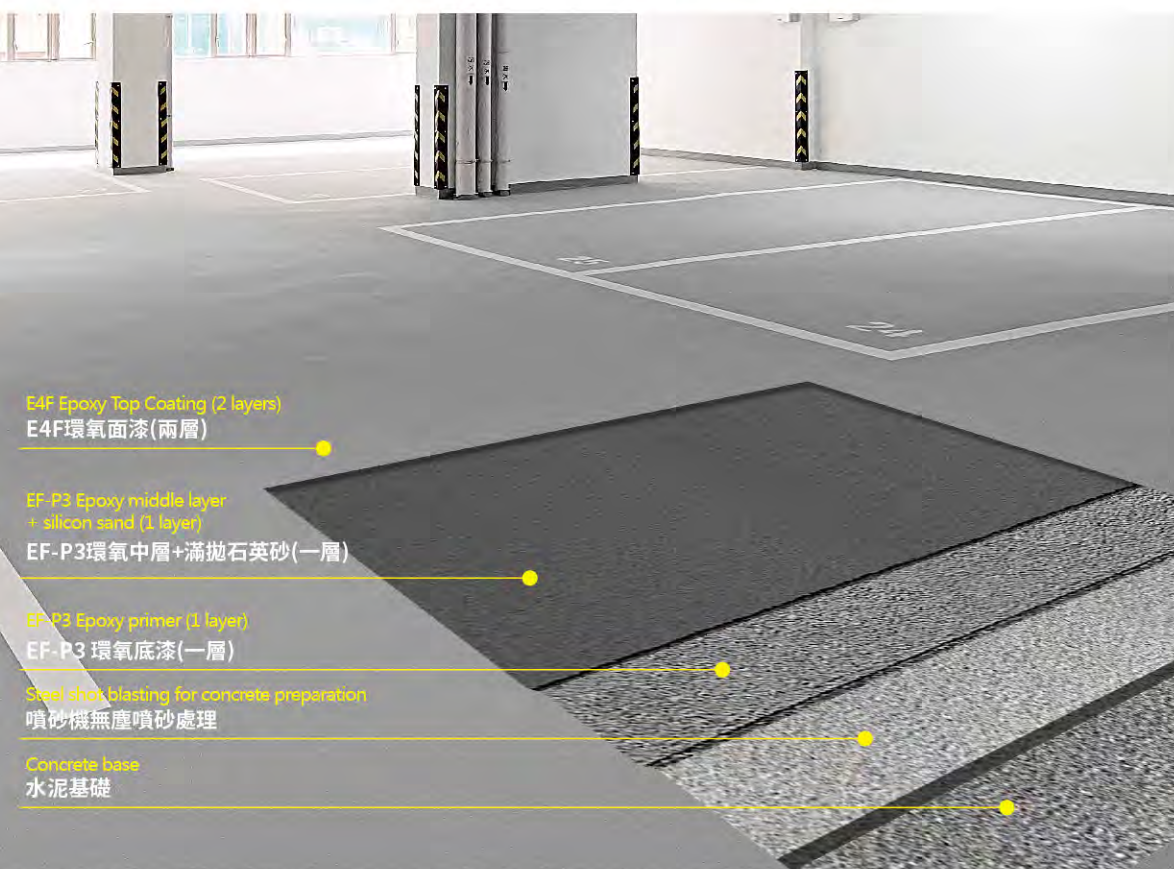
此系統面層顏色豐富, 外層美觀無接縫, 面層防滑耐磨, 適用於:

- a. 多層停車場中間層
- b. 室內停車場
- c. 車庫

Toplus FS System Highlights:

托柏斯FS系統優點:

-  Slip-resistance (Silica sand can be adjusted)
防滑(可調整矽砂顆粒的大小)
-  Durable
耐用
-  Reduce Noise
減少輪胎的噪音
-  Easy to clean
容易清洗
-  Multi-Colour choice
多種顏色



Toplus BS Concrete-based Moisture-resistance System

托柏斯BS水泥基抗潮氣系統

Application : Basement Parking Space

應用: 地下/底層停車場

Toplus BS Concrete-based Moisture-resistance System, adopts multi-layer seamless epoxy resin system, with self-levelling concrete for the substrate construction, the surface can be flat and smooth. Using a Moisture-resistance primer, Toplus BS system could be applied on substrate surface which with high humidity; it is a very well choice to apply in the basement of a car park.

托柏斯BS水泥基抗潮氣系統, 是採用多層無縫環氧樹脂系統, 地基鋪設自流平水泥, 對基面有一定的整平作用, 同時配合抗潮底漆使用, 可在濕度較高的地基表面施工, 適用於停車場的底層。

Toplusfloor Parking System BS has the capacity of reticulating on damp surfaces, such as:

- a. Car park refurbishment
- b. The basement of internal car park
- c. Internal car park

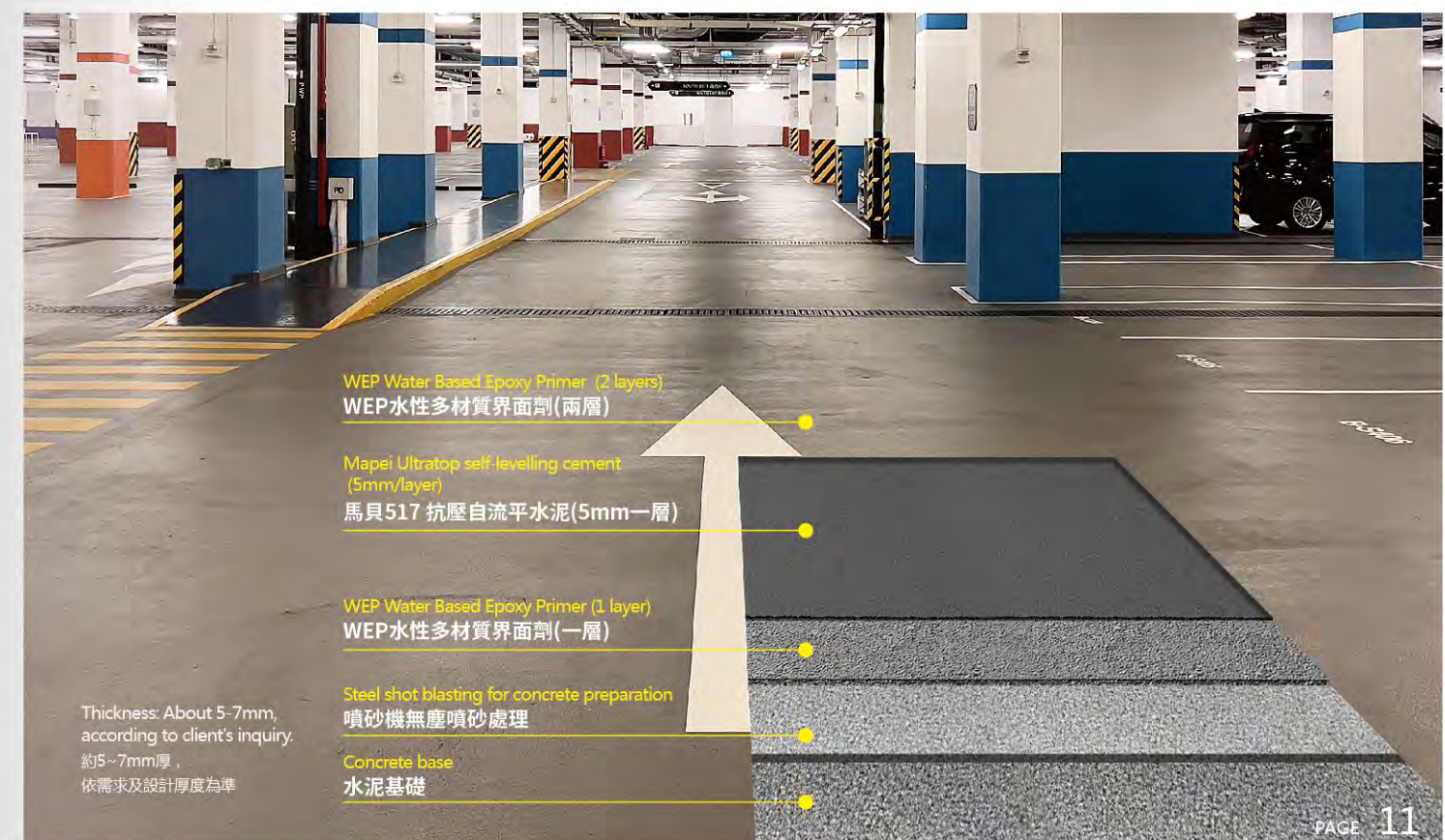
此系統具有良好的抗潮氣性能, 適用於:

- a. 翻新停車場地面
- b. 室內停車場底層
- c. 室內停車場

Toplus BS System Highlights:

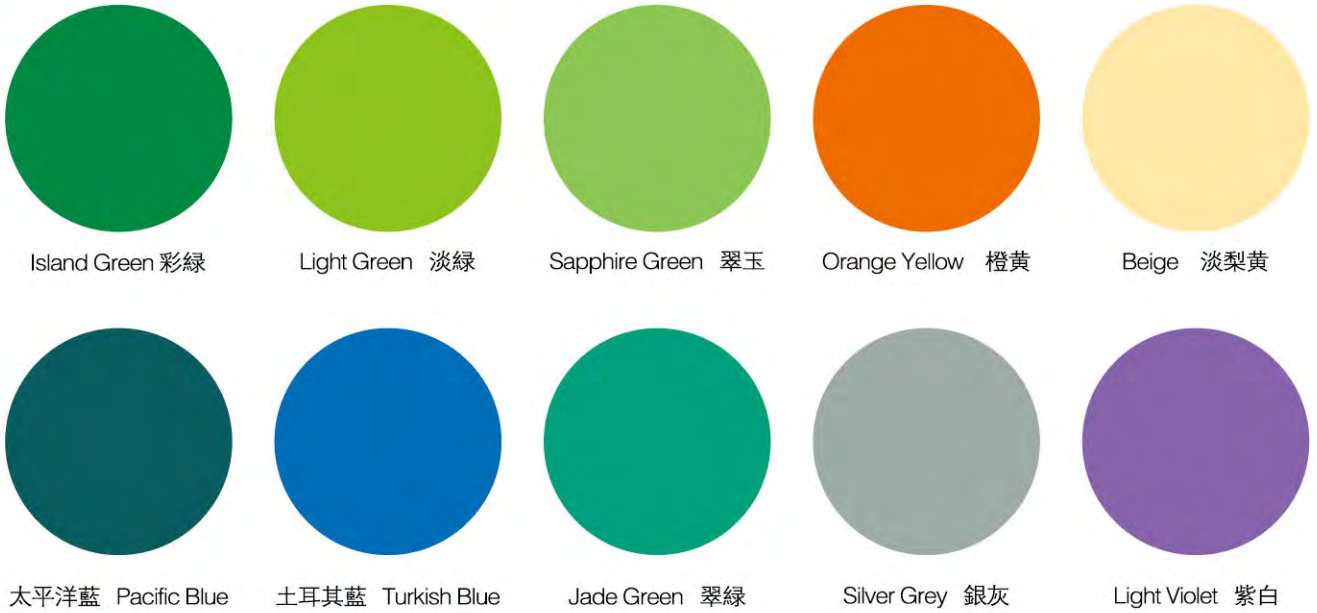
托柏斯BS系統優點:

-  Concrete Base only, low VOC
水泥基產品, 極低的VOC揮發性
-  Extremely well self-levelling
極好的流動性, 找平功能極佳
-  Easy to clean
容易清洗
-  Wear-resistance
耐磨
-  Stain-resistance
耐污



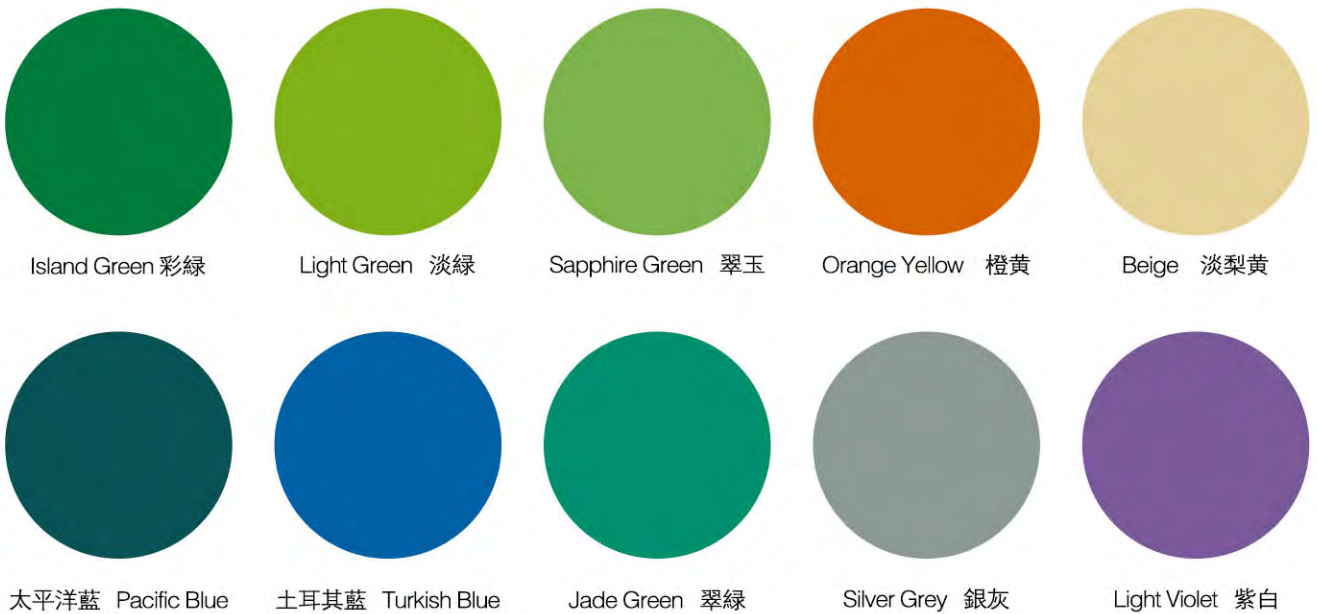
Toplus Epoxy Resinfloor Standard Colour Chart

環氣樹脂面層塗料 - 托柏斯標準色卡



Toplus PU Floor Standard Colour Chart

聚氨酯面層塗料 - 托柏斯標準色卡



Line Paint 劃線塗料

The colors below are for reference only, actual color according to the samples.
以下印刷色謹供參考, 實際顏色以實物為準



Project Photo

實例圖片

